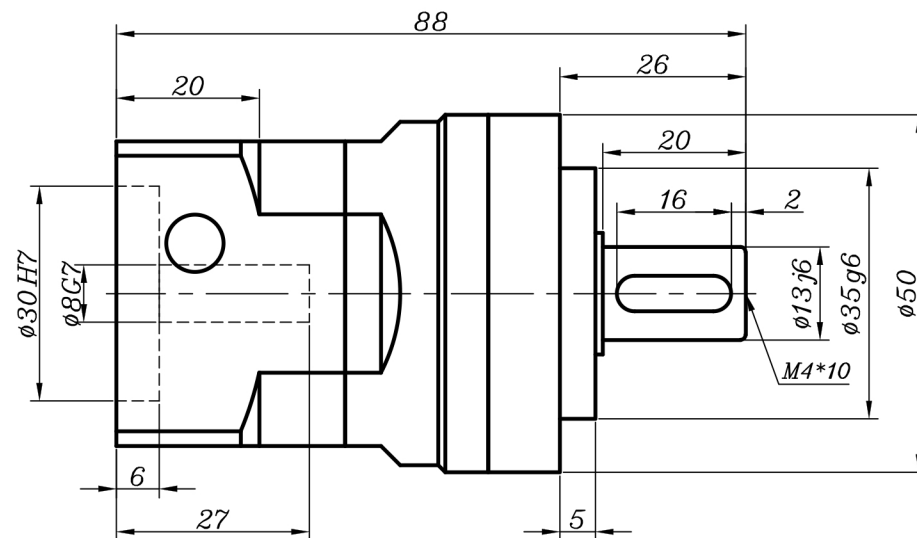



Technical drawing of a square plate with a central hole and four corner holes. The drawing includes dimensions: 4-M4*10 for the corner holes, Ø46 for the central hole, and 42.6 for the side length. The plate has rounded corners and a central hole with a cross-section view.



Technical drawing of a circular mechanical part. The drawing shows concentric circles with the following dimensions and features:

- Outer diameter: $\phi 44$
- Inner diameter: $4-M4 \times 10$
- Inner diameter: 15
- Inner diameter: 5

The drawing includes a dashed circle representing the outer edge of the part. The inner features are labeled with their respective dimensions and specifications.

客户签字 Customer's Signature	速 比 Ratio	1-10	运转效率 Transmission Efficiency	97%	角法 Angle method	第三视角 Third perspective	公司名称 Company name	 锋桦® 锋桦传动科技(江苏)有限公司 锋桦传动设备(上海)有限公司 台湾 锋桦 科技 有 限 公 司
	额定扭矩 Rated Torque	14-22N·m	精度寿命 Service Life	20000Hrs	单位 Unit	mm		
	最大扭矩 Max.Torque	42-66N·m	噪音 Noise	56dB	比例 Proportion	1:1	图名 Drawing name	行星减速机Planetary gearbox: VRL050-L1-S2-P1
	额定输入转速 Rated Input speed	5000rpm	环境温度 Enviromental Temperature	-15°~ +90°	版本 Version	最新版本 Latest version	服务热线 Service hotline	400-8040-668 / QQ:4008040668
	最大输入转速 Max.inputspeed	10000rpm	惯量 Inertia	0.03	日期 Date	2020.11.02	網址/邮箱Website/email	www.fht.tw / www.3fgearmotor.com fht@fht.tw / sales@3fgearmotor.com
	回程间隙 Backlash	≤4arcmin	重量 Weight	0.5Kg	设计 Design	设计 Design	電話/传真Tel/Fax	021-39948832 /021-39948836